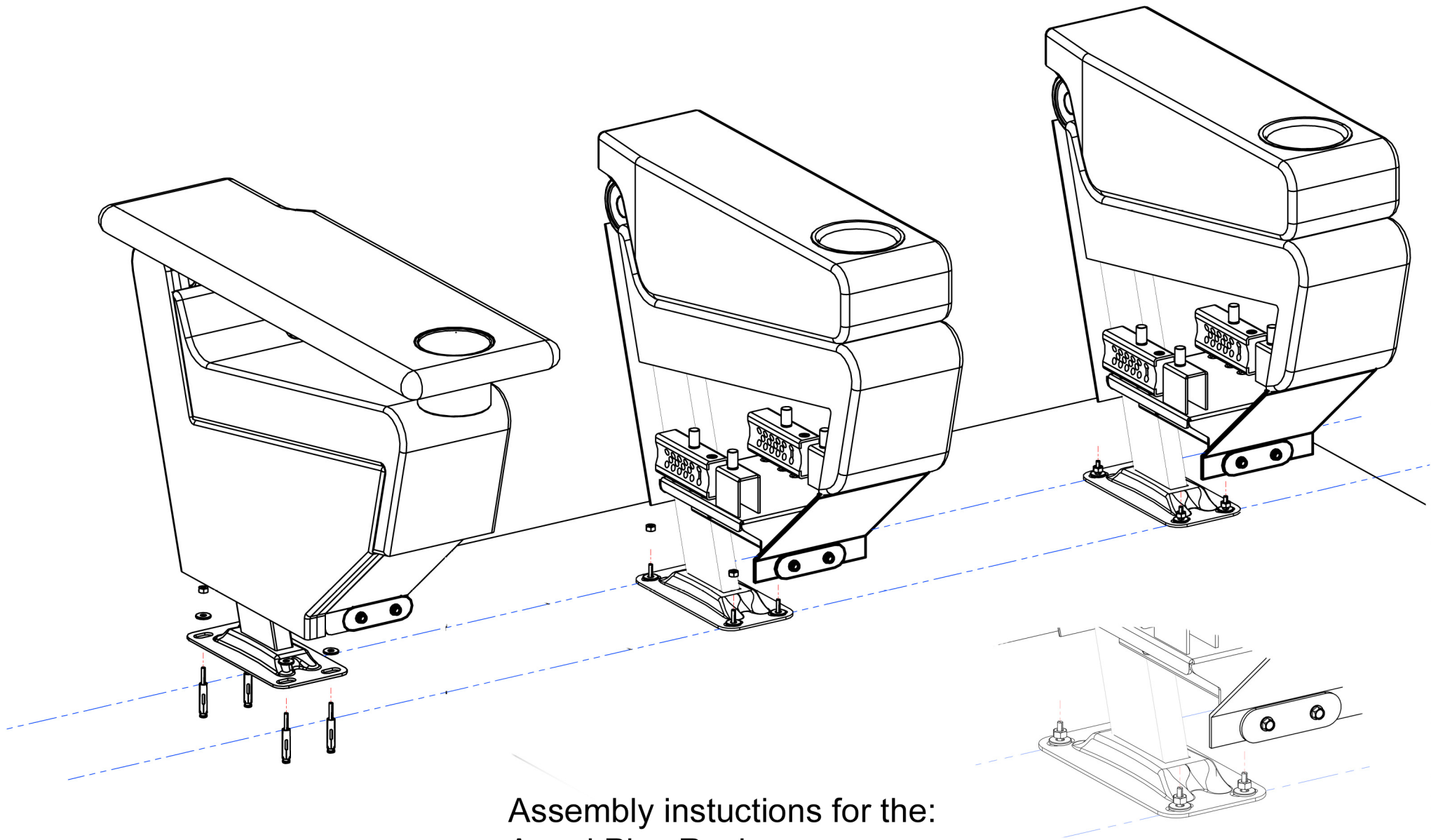


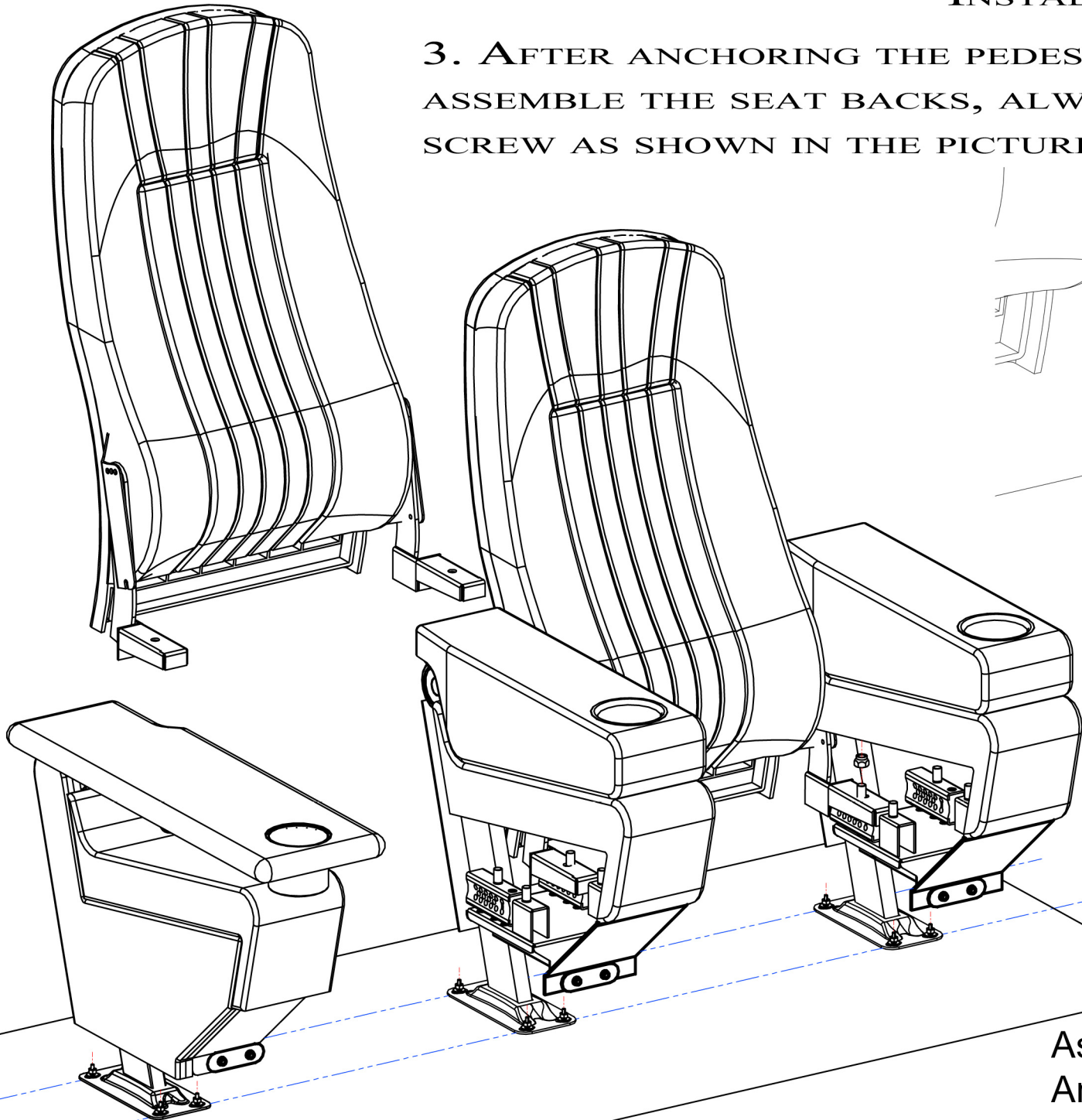
1/1

2. ONCE FLOOR IS DRILLED AND ANCHOR BOLTS ARE CORRECTLY PLACED, SET THE PEDESTAL (CENTER STANDARDS) PAYING CLOSE ATTENTION TO THE WIDTH SHOWN BY A STICKER ON EACH OF THEM.



Assembly instructions for the:
Angel Plus Rocker
Angela Plus Rocker
Alessandria Plus Rocker

3. AFTER ANCHORING THE PEDESTALS, PROCEED TO ASSEMBLE THE SEAT BACKS, ALWAYS ON THE REAR SCREW AS SHOWN IN THE PICTURE.

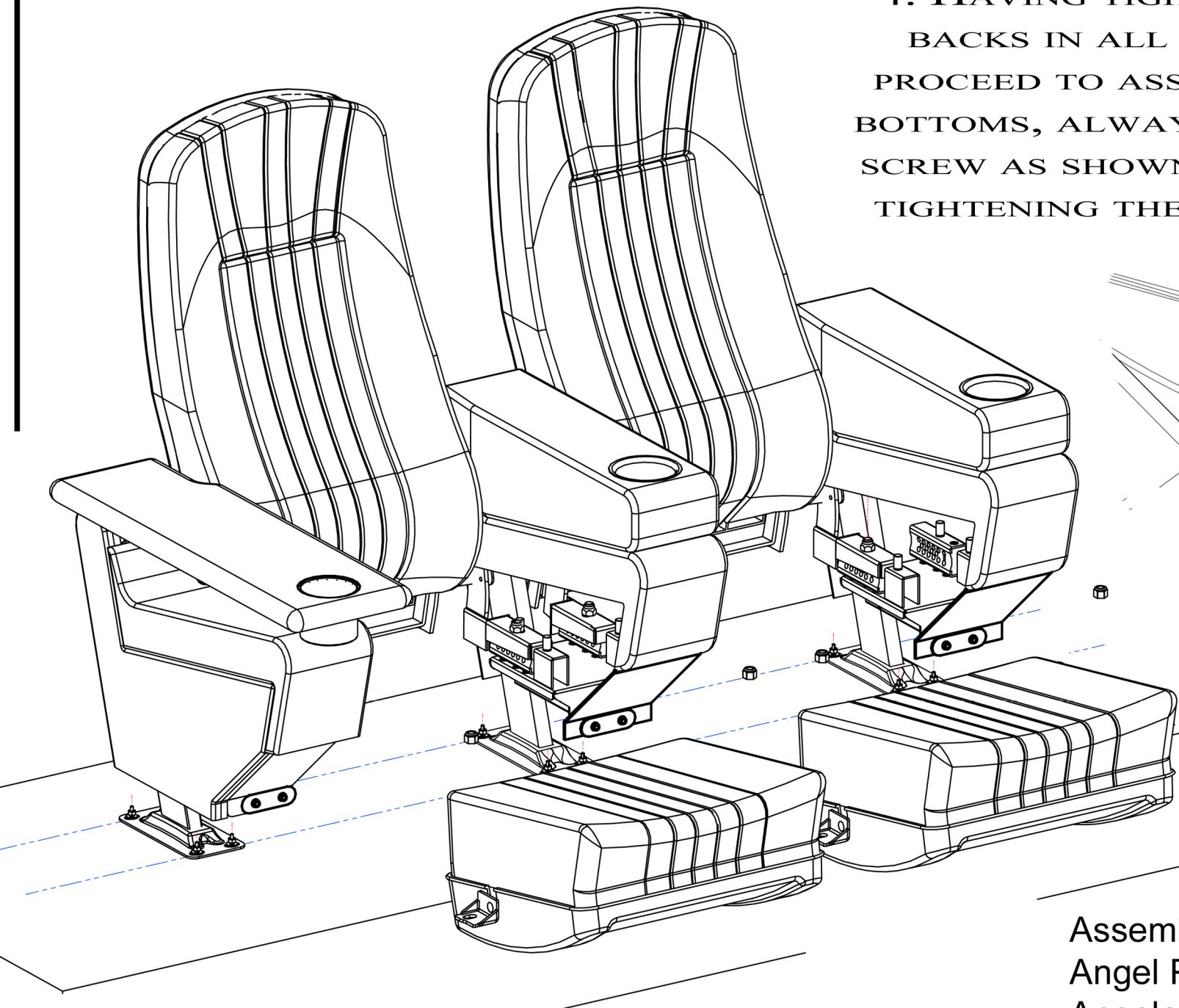


NOTE: THE SEAT BACK IS ASSEMBLED USING THE SECURITY NUT AS SHOWN.

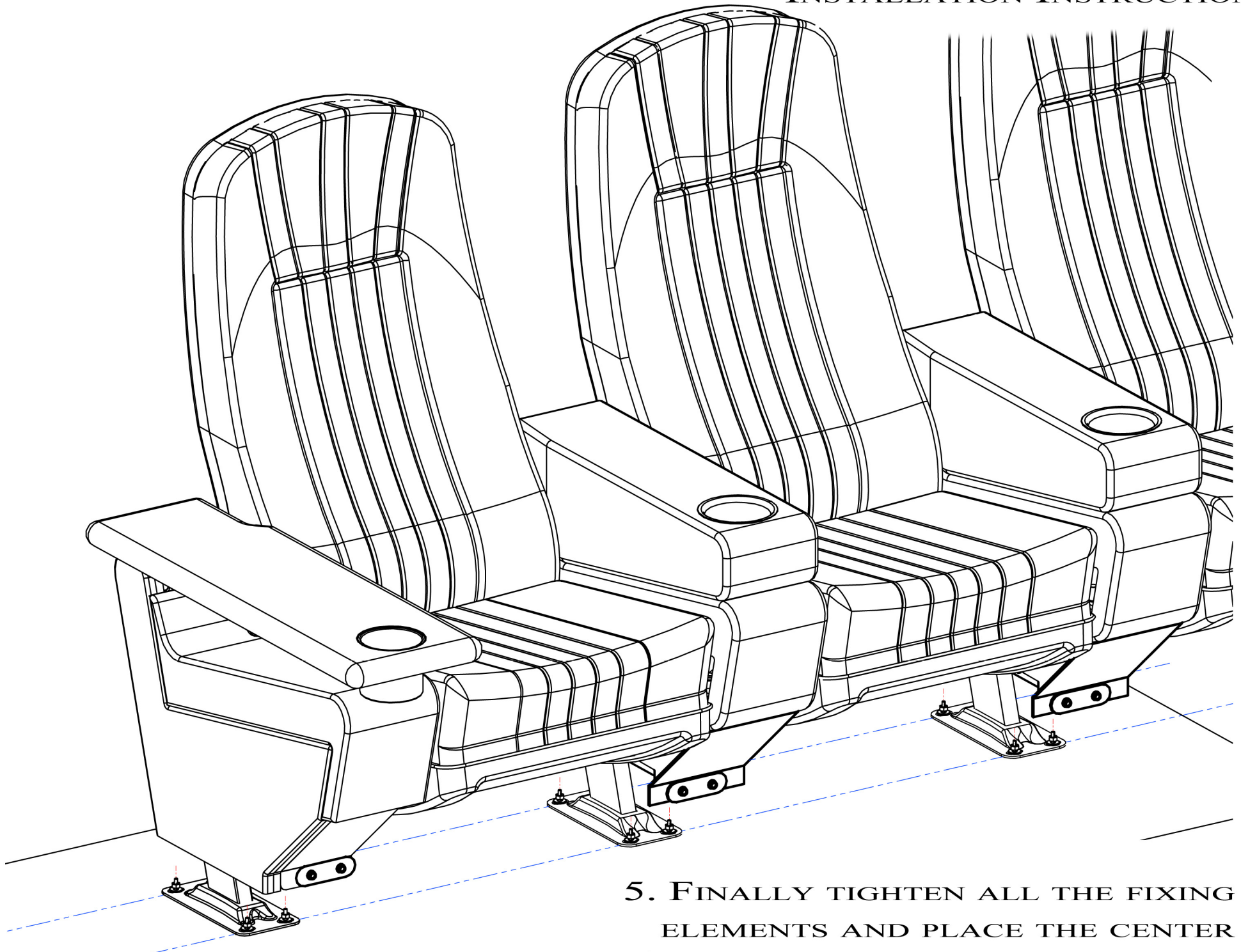
Assembly instructions for the:
Angel Plus Rocker
Angela Plus Rocker
Alessandria Plus Rocker

INSTALLATION INSTRUCTIONS

4. HAVING TIGHTENED THE SEAT BACKS IN ALL THE ROW PLEASE PROCEED TO ASSEMBLE THE SEAT BOTTOMS, ALWAYS ON THE FRONT SCREW AS SHOWN IN THE PICTURE TIGHTENING THE NUT AT ITS TOP.



Assembly instructions for the:
Angel Plus Rocker
Angela Plus Rocker
Alessandria Plus Rocker



5. FINALLY TIGHTEN ALL THE FIXING
ELEMENTS AND PLACE THE CENTER
STANDARD COVERS AS INDICATED.